

CONCEPT DESIGN

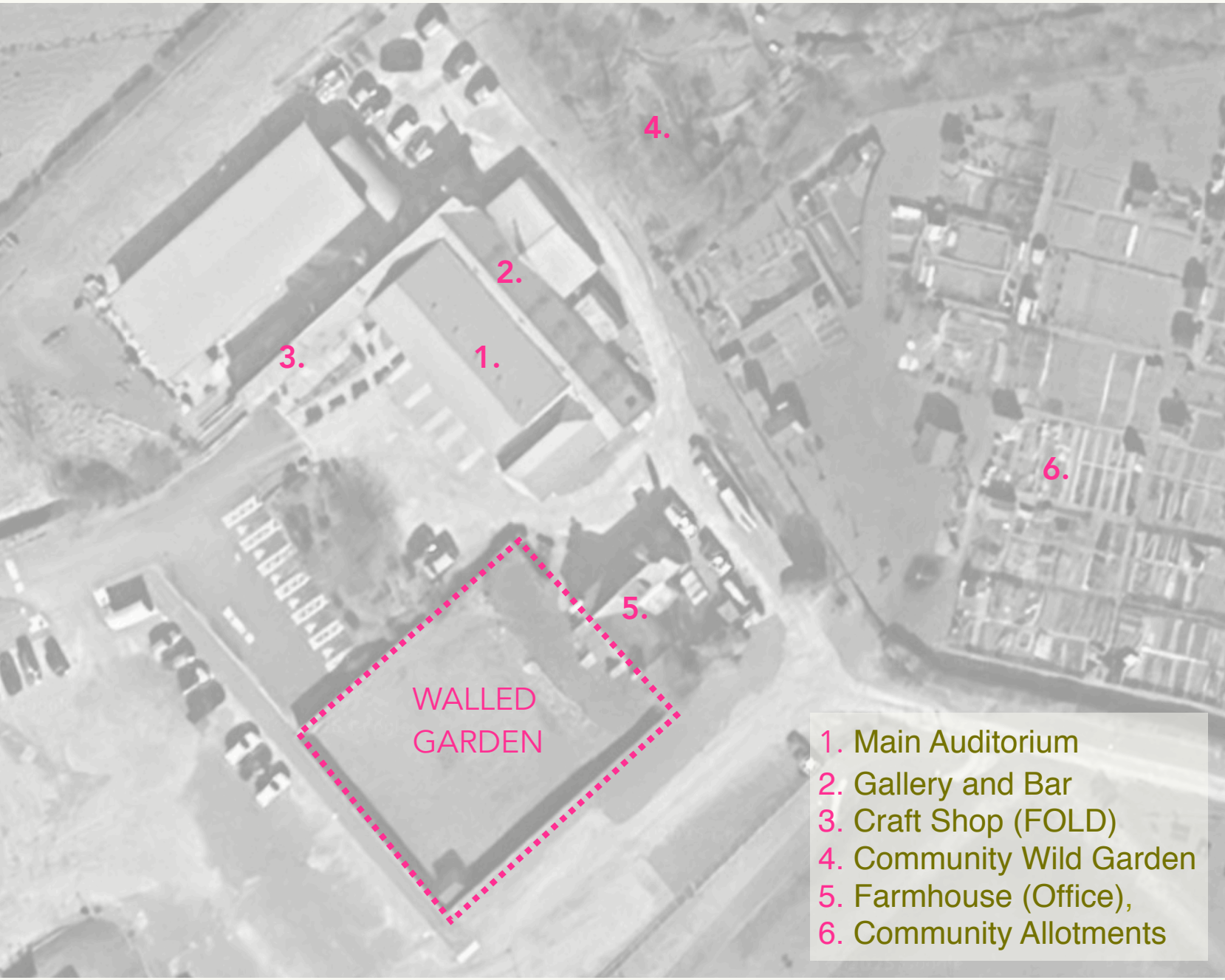
A VIBRANT HUB FOR COMMUNITY, ART, AND ECOLOGY IN ABERDEENSHIRE WHERE BOTH CREATIVITY AND NATURE THRIVE.

The Barn is transforming its Walled Garden (an area of land surrounded by a 150-year-old granite wall with views of Scolty and Clachnaben) from an under-utilised space into a thriving, community-focused space that celebrates rural heritage, ecology, and creative learning. This revitalised space will be a fully accessible, inspiring environment where beneficiaries of all ages engage with nature, learn about growing, soil health, and biodiversity, and take part in arts and ecology-based activities.

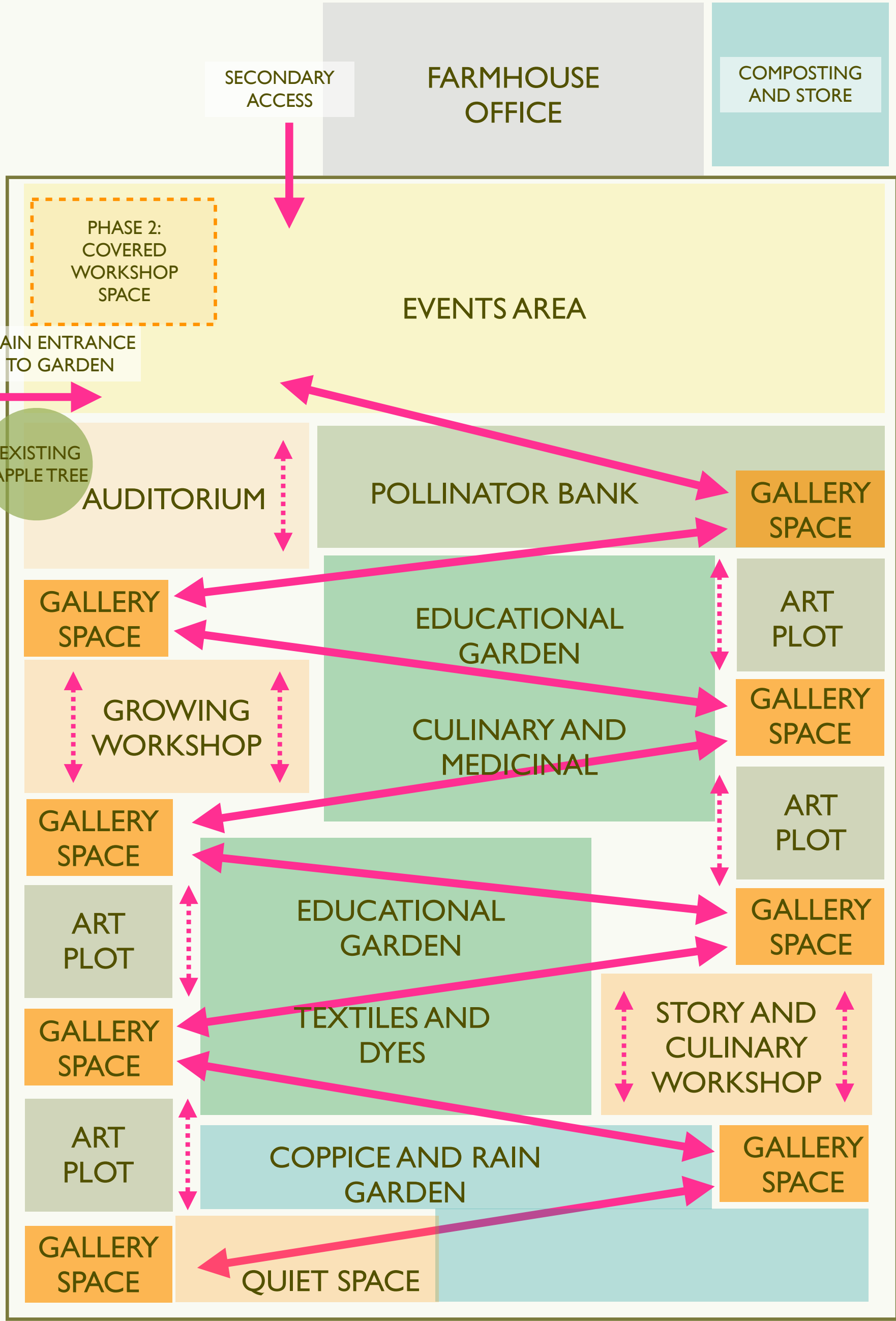
By weaving together artistic projects, environmental education, and local expertise, the Barn's Walled Garden will foster community connection, wellbeing, and sustainability. It will serve as a living classroom, offering hands-on opportunities for community groups to explore the relationships between nature and creativity.

This transformation will embed the Walled Garden as a core part of the Barn's programme, ensuring it becomes a welcoming space where people can gather, learn, and be inspired.

Through collaboration, creativity, and a deep respect for the natural world, the Barn's Walled Garden will provide long-term benefits for our community, enhancing environmental awareness and cultural engagement in Aberdeenshire.



LOCATION FOR PROJECT



SPATIAL STRATEGY

A wide variety of uses are envisaged for the garden and the intention is that it should be fully accessible to all users. A spatial strategy has been developed to ensure that the garden can accommodate a range of purposes from moments of quiet and solitary contemplation to vibrant masterclasses and workshops and even larger, bustling events such as weddings, celebrations and private functions.



EVENTS: WEDDINGS



ARTIST AND SCIENCE RESIDENCY AND WORKSHOP



SPACES FOR CONTEMPLATION

The existing topography of the garden is such that an open flatter area fronts the existing farmhouse office with a steeper slope dropping down to the main area of the garden which then gently slopes down to a central gate at the bottom of the space.

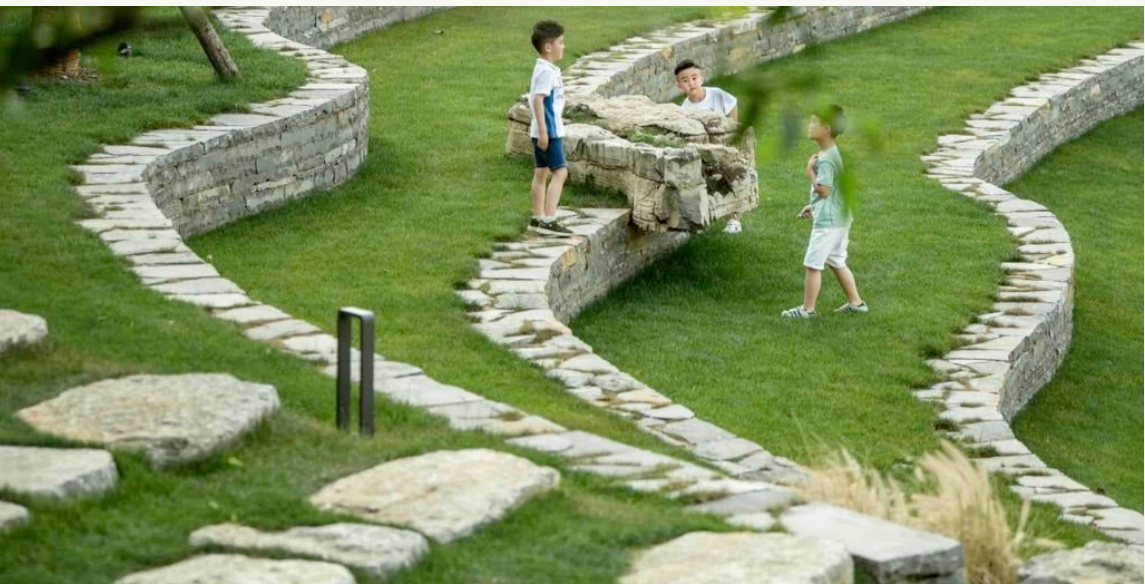
A welcoming entrance is provided from the main courtyard of the Barn and this top space is utilised as an open and flexible outdoor events area which overlooks the rest of the garden. In a future phase of the garden a covered area is proposed to be incorporated into this space.

Reflecting the heritage as a horticultural walled garden the rest of the garden is laid out in a semi-formal structure, accessed through a switchback path which weaves its way down the slope at a gentle gradient suitable for wheelchairs and buggies.

The existing steeper bank down to the lower section of the garden is partly utilised to form a small, informal auditorium of stepped seating with the rest proposed as a bank of pollinator friendly planting.

The central part of the garden is devoted to educational sensory gardens exhibiting ecologically and culturally pertinent plant species. To each side of these, spaces are devoted to artistic practice with plots available for artist residencies and gallery spaces intended for exhibition with artists able to prepare installations which interact with the wall .

At the bottom of the garden a copse of native coppice trees are proposed. These provide some screening of the middle distance view of the rugby club and provide a resource for artistic creation. Species could include birch, hazel and willow. Amongst this copse a quiet area for contemplation is proposed.



AUDITORIUM SEATING:
SET INTO SLOPE TO ALLOW INFORMAL TALKS



GALLERY SPACE:
ASSOCIATED WITH WALL TO ALLOW INSTALLATIONS AND EXHIBITIONS



EDUCATIONAL GARDENS:
SHOWCASING PLANTS FOR PURPOSES



ARTISTS PLOTS:
ASSOCIATED WITH WALL TO ALLOW INSTALLATIONS AND EXHIBITIONS



STORYTELLING AND CULINARY WORKSHOP SPACE:
INCLUDING ROUNDTABLE SEATING, FIRE PIT, FOR COOKERY WORKSHOPS, COMMUNITY BBQS AND GROUP DISCUSSION
IMAGE: LUNDIES CASTLE - GRAS ARCHITECTS



GROWING WORKSHOP SPACE:
INCLUDING RAISED PLANTERS FOR COMMUNITY GROWING PROJECTS. PLANTERS TO BE ACCESSIBLE FOR ALL INCLUDING WHEELCHAIRS
IMAGE: COMRIE ART HUT - COMRIE CROFT